

AURORA, COLORADO

# ILS or LOC/DME RWY 32

LOC I-BKF <b>109.7</b>	APCH CRS <b>323°</b>	Rwy ldg <b>11,006</b> THRE <b>5664</b> Arpt Elev <b>5664</b>
---------------------------	-------------------------	--

AL-538 [USAF]

BUCKLEY AFB (KBKF)

▼ \* When ALS inop, increase CAT ABCDE RVR to 40 and vis to 3/4 miles.  
 \*\* When ALS inop, increase CAT AB RVR to 55 and vis to 1 mile, CAT CDE vis to 1 1/4 miles.

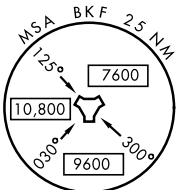
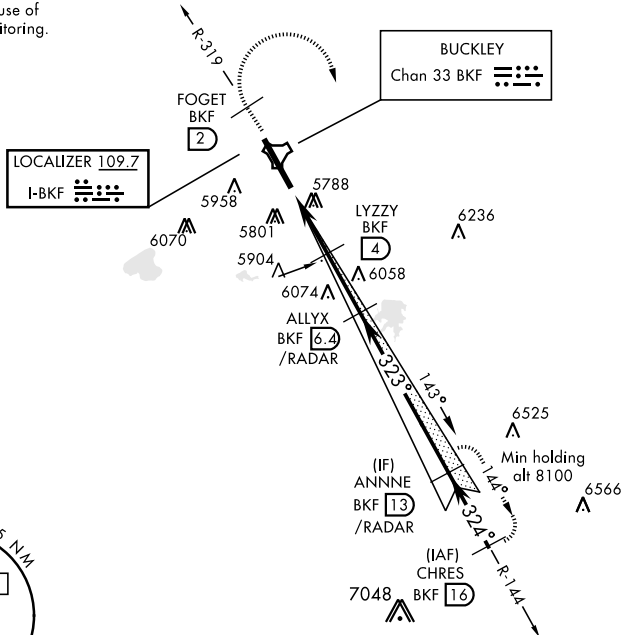


MISSED APPROACH: Climb via BKF TACAN R-319 to FOGET (2 DME), then climbing right turn to 8100 BKF R-144/13 DME (ANNNE) and hold or as directed by ATC.

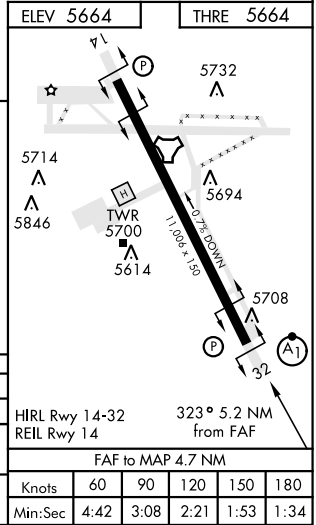
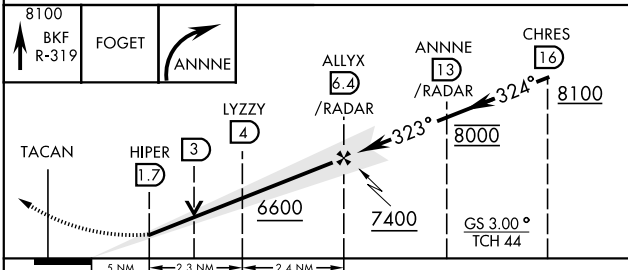
ATIS ★ <b>119.675 259.3</b>	DENVER APP CON <b>128.45 251.075</b>	BUCKLEY TOWER ★ <b>121.0 291.675</b>	GND CON <b>121.6 275.8</b>	CLNC DEL <b>121.6 275.8</b>
--------------------------------	---	---	-------------------------------	--------------------------------

Missed approach requires use of RNAV or ATC RADAR monitoring.

CAUTION: ILS RWY 32  
Height Group 4 WCH 19'



EMERG SAFE ALT 100 NM 16,500



CATEGORY	A	B	C	D	E	HIRL Rwy 14-32 REIL Rwy 14	323° 5.2 NM from FAF
S-ILS 32 *	5864/24 200 (200-1/2)					FAF to MAP 4.7 NM	
S-LOC 32 **	6280/24 616 (700-1/2)		6280-1 3/4 616 (700-1 3/4)		Knots: 60 90 120 150 180		
CIRCLING	6280-1 616 (700-1)		6280-1 3/4 636(700-2)		Min:Sec: 4:42 3:08 2:21 1:53 1:34		

AURORA, COLORADO  
Amdt 2 22SEP11

39°42'N-104°45'W

BUCKLEY AFB (KBKF)

# ILS or LOC/DME RWY 32

SW-1, 26 JUN 2014 to 24 JUL 2014

SW-1, 26 JUN 2014 to 24 JUL 2014