

TACAN BKF Chan <b>33</b>	APCH CRS <b>328°</b>	Rwy ldg <b>11,006</b> THRE <b>5664</b> Arpt Elev <b>5664</b>
-----------------------------	-------------------------	--

JAL-538 [USAF]

BUCKLEY AFB (KBKF)

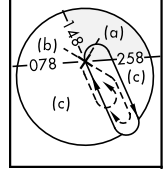
ALSIF-1
 

**MISSED APPROACH:** Climbing right turn to 8200 to intercept BKF TACAN R-148 direct to BEKEE (13 DME) and hold or as directed by ATC.

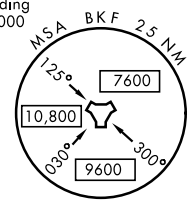
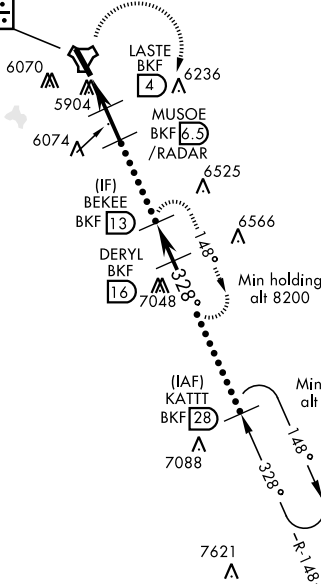
\* When ALS inop, increase CAT CDE vis to 1¾ miles.

ATIS ★ <b>119.675 259.3</b>	DENVER APP CON <b>128.45 251.075</b>	BUCKLEY TOWER ★ <b>121.0 291.675</b>	GND CON <b>121.6 275.8</b>	CLNC DEL <b>121.6 275.8</b>
--------------------------------	---	---	-------------------------------	--------------------------------

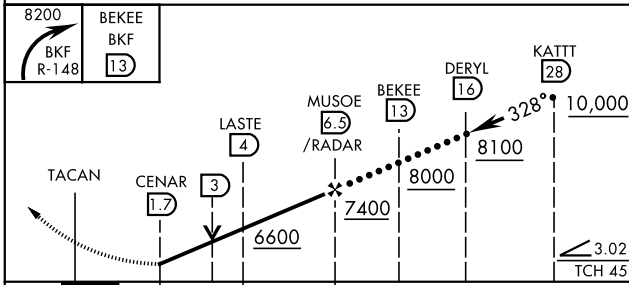
Missed approach requires use of RNAV or ATC RADAR monitoring.



**BUCKLEY**  
Chan 33 BKF



EMERG SAFE ALT 100 NM 16,500



ELEV 5664	THRE 5664
-----------	-----------

REIL Rwy 14  
HIRL Rwy 14-32 328° to TACAN

CATEGORY	C	D	E
S-32 *	6280-1¾ 616 (700-1¾)		
CIRCLING	6280-1¾ 616 (700-1¾)	6300-2 636 (700-2)	6500-3 836 (900-3)

SW-1, 26 JUN 2014 to 24 JUL 2014

SW-1, 26 JUN 2014 to 24 JUL 2014