

HI-ILS or LOC/DME RWY 32

LOC I-BKF 109.7	APCH CRS 323°	Rwy Idg 11,006 THRE 5664 Arprt Elev 5664
---------------------------	-------------------------	---

JAL-538 [USAF]

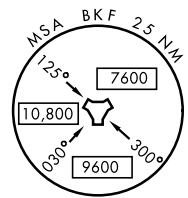
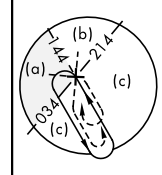
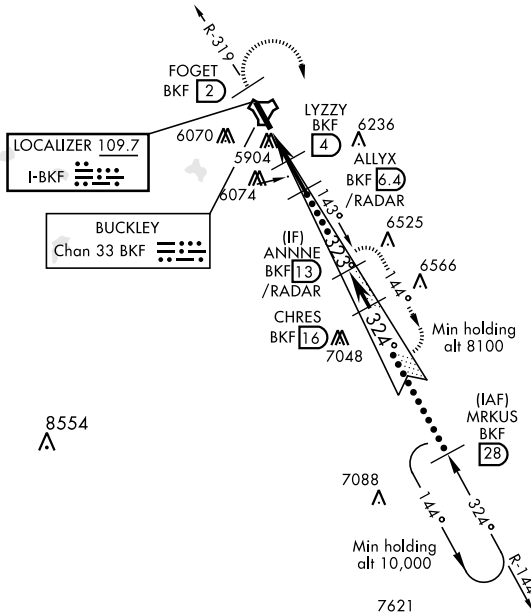
BUCKLEY AFB (KBKF)

<p>▼ * When ALS inop, increase CAT CDE RVR to 40 and vis to ¾ miles. ** When ALS inop, increase CAT CDE vis to 1¾ miles.</p>	<p>ALSF-1 A1</p>	<p>MISSED APPROACH: Climb via BKF R-319 to FOGET (2 DME), then climbing right turn to 8100 BKF R-144/13 DME (ANNNE) and hold or as directed by ATC.</p>
--	----------------------	---

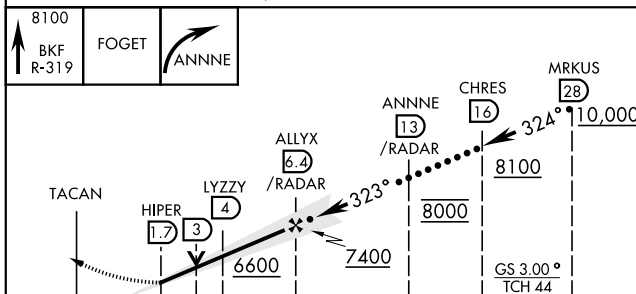
<p>ATIS ★ 119.675 259.3</p>	<p>DENVER APP CON 128.45 251.075</p>	<p>BUCKLEY TOWER ★ 121.0 291.675</p>	<p>GND CON 121.6 275.8</p>	<p>CLNC DEL 121.6 275.8</p>
--	---	---	---------------------------------------	--

CAUTION: ILS RWY 32
Height Group 4 WCH 19'.

Missed approach requires use of
RNAV or ATC RADAR monitoring.

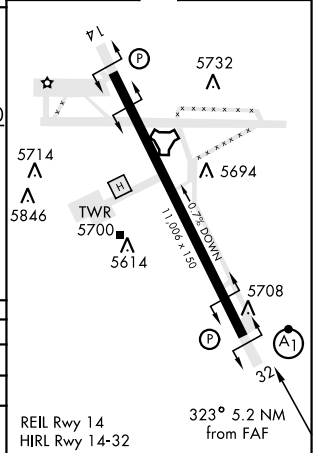


EMERG SAFE ALT 100 NM 16,500



ELEV 5664	THRE 5664
-----------	-----------

CATEGORY	C	D	E
S-ILS 32 *	5864/24	200	(200-½)
S-LOC 32 **	6280-1¾	616	(700-1¾)
CIRCLING	6280-1¾ 616 (700-1¾)	6300-2 636 (700-2)	6500-3 836 (900-3)



HI-ILS or LOC/DME RWY 32

SW-1, 26 JUN 2014 to 24 JUL 2014

SW-1, 26 JUN 2014 to 24 JUL 2014